



MITCHELL
FURNITURE SYSTEMS

15 YEAR WARRANTY

Each component of the Mitchell Portable Stage and Riser Folding System is designed and manufactured to provide long-life and space saving flexibility to meet present and future needs. The quality of heavy duty materials and workmanship of our folding systems is unsurpassed, That's why so many municipalities with arenas and auditoriums specify Mitchell. If you are looking for a stage or riser system that will give you decades of service, look no further than Mitchell. Like all Mitchell products our stage and risers are built to last.



Model #'s A33, B33 & C33



Model #'s A15, B15 & C15

STAGE LAYOUTS
4' X 8' PLATFORMS
STEEL GUARD RAILS
ADA STAIRS & RAMPS
BAND & CHORAL RISERS
18" & 36" TAPERED RISERS
RECTANGLE SEATED RISERS



Model # 549



Model # TR458

PORTABLE

FAST, SAFE AND FLEXIBLE SET-UP

TRUCKS
SKIRTING
CARPETING
CHAIR STOPS
DIRECTOR'S PODIA



Model # T33

Marquette University School of Engineering has performed Dead Load-Live Load testing of Mitchell stage platforms and risers with the following results:

"Stage and Riser units tested withstood the required 200 Lb./Sq. Ft. live load plus approximately 24% of that live load plus horizontal load equal to 10% of the required live load without any noticeable failure of permanent deformation of any part of the unit, and shall be considered as having passed this test without exceptions or reservation."

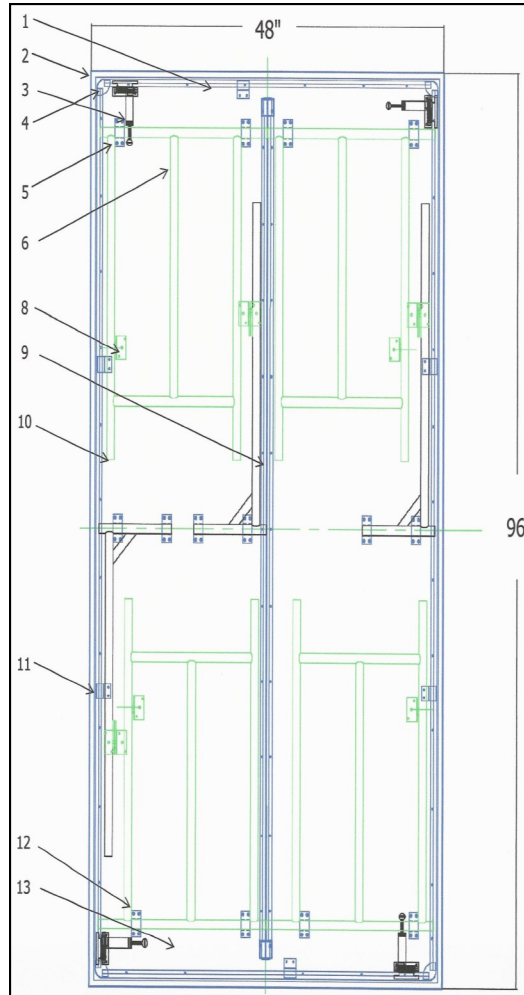
Further testing:

Pill Testing: Pass DOC FF
1-70 - Class A Tunnel

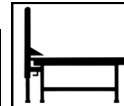


48" X 96" STAGE SPECIFICATIONS

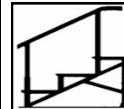
- 1) **Aprons:** 1-3/4" deep, 16 gauge cold rolled steel "U" channels. Load is carried from platform top through channel top flange to top cross tube of leg to floor.
- 2) **Edge:** 3/4" 16 gauge galvanized steel angle fastened with #10 x 11/16" type A full threaded, steel screws.
- 3) **Swing Clamps:** 4 self storing swinging clamps hook inside of channel of adjoining platform forming a positive frame to frame lock, retained by 5/16" thumb screw.
- 4) **Corners:** Stamped .050" thick, 8 spot-welds each.
- 5) **Weld:** Steel is welded for weld strong as parent steel.
- 6) **Steel Leg Tube:** 1.05" O.D. x .073" wall, 45% high-carbon content structural steel. Cross tube on apron flange transmits load from top through channel to floor.
- 7) **Steel Leg Brace (Not Shown):** (4) 1/4" x 3/4" x 38-1/4" steel braces on end leg and (3) 3/2" L on center leg fastened with 1/4" solid rivets; AISI C1008 steel.
- 8) **Brace Bracket:** .075" thick brackets fastened with #10 x 11/16" type A screw 1/4" flat-head platform bolt.
- 9) **Double Mid-Apron:** Platform has two separate apron channel assemblies welded together and centered in the middle of platform for added rigidity.
- 10) **Crutch Tip:** Rubber tip covers leg end; .065" thick washer inside tip for strength and non-slip floor contact.
- 11) **Gussets:** .060" thick gussets with (2) spot welds to web of channel and fastened with (2) #10 x 11/16", type A full thread hardened screws. **Leg Clips:** .060" steel.
- 12) **Unified Structure (Not Listed):** Rigid 1-3/4"x16 gauge box channel frame set 3/4" from edge, extends around perimeter, permanently joined by corner stampings & reinforced with steel webs to prevent stress twist. Mid-channels welded back/back provides stiffening.
- 13) **Tops:** 3/4" Panelam™ panels are made with select plywood and covered with in black polyethylene (top surface is textured - bottom is smooth) providing great wearing characteristics with a moisture retardant barrier. Panelam is a lightweight overlay bonded with exterior grade adhesive.



ACCESSORIES/DESIGNS



1-5/8"-OD High-Carbon Steel Guard Rails clamp to stage or riser. Powder coated finish is durable and easy to maintain.



ADA Stairs 16" to 72" H in 8" increments (guard rails per side are recommended.) Each tread has slip resistant Panelam™.



Conductor's Podia Available in either 8" H single step or 16" H two step platform which has a guard rail.



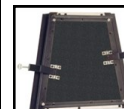
Chair stops are ideal for stands with seats. A raised steel edge molding provides a safe barrier. Edging can be field installed.



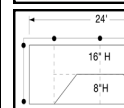
4'W x 8'L Ramps rise from 0" to 48" with a 1"/ft. incline approved by ADA. Ramps are made with slip resistant Panelam™ and angled guard rails.



Tri-Corners offer extra space, and don't compromise overall outer dimensions of your layout. They provide added set design capability & improve sight lines.

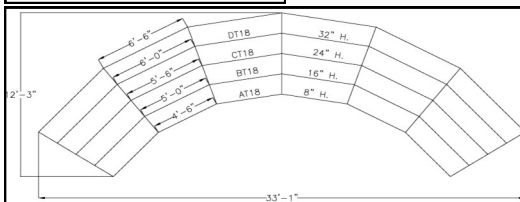


Tapered Inserts create multi-level, semi-circular stands for band or choral groups and add length/depth to seat or stand.



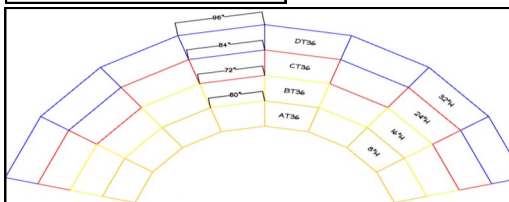
Let us recommend a layout to match your requirements.

18" Tapered Standing Risers



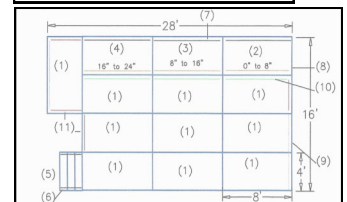
Model	Description	Length	Singers
AT18	Step 1 - 8"	54"-60"	3
BT18	Step 2 - 16"	60"-66"	4
CT18	Step 3 - 24"	66"-72"	5
DT18	Step 4 - 32"	72"-78"	5

36" Tapered Standing Risers



Model	Description	Length	Singer
AT36	Step 1 - 8" H	48"-60"	3
BT36	Step 2 - 16" H	60"-72"	4
CT36	Step 3 - 24" H	72"-84"	5
DT36	Step 4 - 32" H	84"-96"	6

Stage (Many options, consult the factory.)



Model	Dimensions
A48	98" L x 48" W x 8" H
B48	98" L x 48" W x 16" H
C48	98" L x 48" W x 24" H
D48	98" L x 48" W x 32" H
E48	98" L x 48" W x 40" H
X48	98" L x 48" W x 42" H
F48	98" L x 48" W x 48" H

15" Rectangular Standing Risers

Description	Length	Singers
A15	96" L	6
B15	96" L	6
C15	96" L	6
D15	96" L	6

33" Rectangular Standing Risers

15" & 33" make a 48" Seated Riser

Description	Length	Singers
A33	96" L	6
B33	96" L	6
C33	96" L	6
D33	96" L	6