



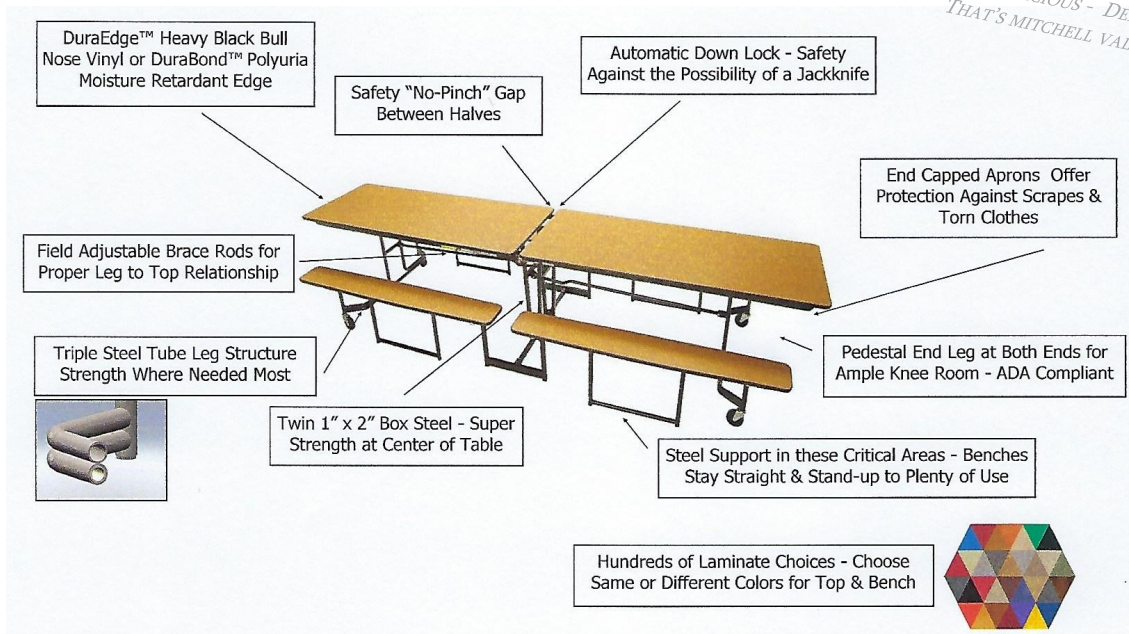
**MITCHELL**  
FURNITURE SYSTEMS

NP PorTable is a family of mobile tables with a variety of sizes 8 Ft., 10 Ft. and 12 Ft. long; available with bench or up to 16 individual seats. These are durable tables just like all of our Mitchell products. With dual lift assists, our NP tables are friendly to the facility staff; torsion bars and spring tubes help the tables fold and unfold with little effort. Seats are supported with large steel plates and made of the same material as the table top. Even after years of use these seats are sturdy and will not wobble like plastic seats do. Mitchell began manufacturing in 1896. Over those many years our value propositions has withstood the test of time. We're proud that we build a table that lasts!



NP's CLASSIC DESIGN

DURABLE - SPACIOUS - DEPENDABLE  
THAT'S MITCHELL VALUE!



15 YEAR WARRANTY



## SPECIFICATIONS

### Table Top Supports

Two full length, 1-3/4" D x 16-gauge cold rolled steel apron channels with rounded edges and dressed off end fittings for safety.

### Twin Dual Center Legs

1" x 1" 16-gauge box tubing at the center of the table provides positive, direct support for each half of the table top.

### End Legs

Consists of three tubes for rigid, long lasting strength. One is welded on top, the bottom tube has an extra tube inside. Outer tubes, wall thickness of .072".

### Seating

12'-1" Benches (4) are 9-1/2" x 64" and are 17" H for proper knee clearance. Seats are 9" x 13" with "no-wobble" steel plate supports underneath.

### Table & Seat Tops

Choose either our custom DuraEdge™ Polyvinyl, extended bullnose edge on 3/4" Resin Wood core, topped with high pressure laminate and balanced with durable Gator™ black backer. Or tops edged with Mitchell's DuraBond™ black Polyurea, moisture retardant edge on 3/4" MDF core, topped with high pressure laminate, with a rigid, black Phenolic, moisture retardant backer.

### Fasteners

Tops are attached with full threaded, hex head screws with a minimum holding power of 300lbs. Each fastener is machine driven and seated. The hex head permits normal maintenance of units if required.

### Locks

Steel uplocks automatically engage when table's folded and manually release for user position. Downlock engages automatically to prevent the possibility of a jackknife; manual release is accessible from both sides of the table.

### Unitized Construction

Welded steel brackets and fittings solidly join and position legs to channel support aprons and anchor the torsion bar lift assists.

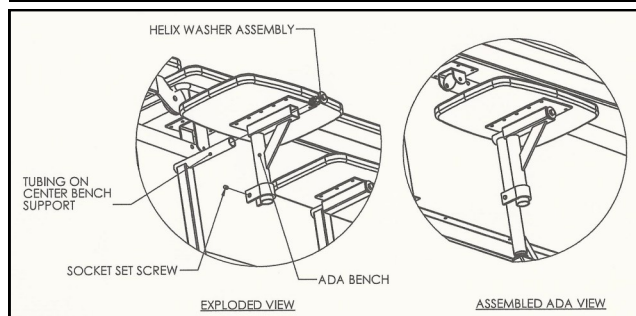
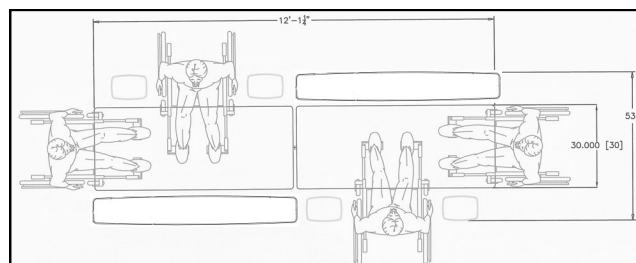
### Lift Assists

Industry best dual lift assists, both concealed torsion bars and extension springs for easy operation throughout the use of the table.

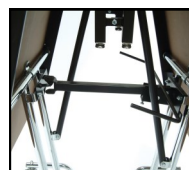
### Finish

End legs are available in either Black Epoxy Powder Coat or Nickel Chromium. The understructure is black powder coat.

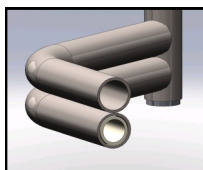
## ADA - NP Retro Kit



Section 902 of the 2010 ADA Standards requires 5% of the cafeteria space to be compliant. ADA tables are 28" to 34" H, have knee clearance of 27" H x 19" D and provide a 30" W serving surface. NP12 end legs are recessed and meet these standards. In addition by simply removing a side bench and using our ADA Retro Kit (Model # 67-098) students can sit along the side of the table as well. Please contact Mitchell Customer Service for more information 800/290-5960.



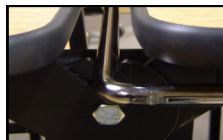
Tamper resistant steel storage up-lock.



Triple steel tube end leg.

## Long Lasting Quality

MODEL #	NP-8	NP-10	NP-12	NP-8/8	NP-12/10	NP-12/12	NP-12/16
Overall Length	8'-1"	10'-1"	12'-1"	8'-1"	12'-1"	12'-1"	12'-1"
Seating Capacity	8-10	10-12	14-16	8	10	12	16
Bench/Seat Size	9" x 40"	9" x 52"	9" x 64"	9" x 13"	9" x 13"	9" x 13"	9" x 13"
Storage Dimensions	53.5" W x 34" D x 64" H	53.5" W x 34" D x 73.5" H	53.5" W x 34" D x 79.5" H	53.5" W x 34" D x 64" H	53.5" W x 34" D x 79.5" H	53.5" W x 34" D x 79.5" H	53.5" W x 34" D x 79.5" H
Table Height	27" or 29"	27" or 29"	27" or 29"	27" or 29"	27" or 29"	27" or 29"	27" or 29"
Bench/Seat Height	15" or 17"	15" or 17"	15" or 17"	17"	17"	17"	17"
DuraEdge™ Polyvinyl T-Mold	Yes	Yes	Yes	Yes	Yes	Yes	Yes
DuraBond™ Polyurea Sprayed-on	Yes	Yes	Yes	Yes	Yes	Yes	Yes



Heavy-duty down-lock release handle automatically locks the two halves of the table at the hinge.

