

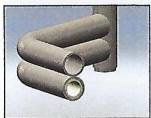


Students find the NPX comfortable and inviting. Facility staff love the ease of folding, moving and cleaning around and under this table. The Business Office appreciates its affordability, longevity and low cost maintenance. The NPX is the table you'll want to have in your cafeteria.

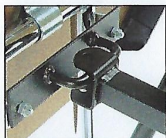


SPACIOUS SUPER LIFT ASSISTS DURABLE

DuraEdge™ Heavy Black Bull Nose Vinyl or DuraBond™ Polyurea Moisture Retardant Edge



Triple Steel Tube Leg Structure Strength Where Needed Most



Rugged Steel Storage Up-Lock

Safety "No-Pinch" Gap Between Halves

Automatic Down Lock - Safety Against the Possibility of a Jackknife

End Capped Aprons Offer Protection Against Scrapes & Torn Clothes

Pedestal End Leg at Both Ends for Ample Knee Room - ADA Compliant

4" Neoprene Swivel Casters

Twin 1" x 2" Box Steel - Super Strength at Center of Table

Field Adjustable Brace Rods for Proper Leg to Top Relationship

1" x 1" Box Steel Horizontal Supports run full length under each bench. Benches Stay Straight & Stand-up to Plenty of Use

**Mitchell's NPX12 has Excellent lift assists:
Two Spring Tubes & Four Torsion Bars.**

Hundreds of Laminate Choices - Choose Same or Different Colors for Top & Bench



SPECIFICATIONS

Table Top Supports

Two full length, 1-3/4" D x 16-gauge cold rolled steel apron channels with rounded edges and dressed off end fittings for safety.

Twin Dual Center Legs

1" x 1" 16-gauge box tubing at the center of the table provides positive, direct support for each half of the table top.

End Legs

Consists of three tubes for rigid, long lasting strength. One is welded on top, the bottom tube has an extra tube inside. Outer tubes have minimum wall thickness of .072".

Seating

Benches are 9-1/2" x 64" and are positioned at 17" H, each of the four benches provide proper knee clearance from understructure.

Table & Seat Tops

Choose either our custom DuraEdge™ Polyvinyl, extended bullnose edge on 3/4" Resin Wood core, topped with high pressure laminate and balanced with durable Gator™ black backer. Or tops edged with Mitchell's DuraBond™ black Polyurea, moisture retardant edge on 3/4" MDF core, topped with high pressure laminate, with a rigid, black Phenolic, moisture retardant backer.

Fasteners

Tops are attached with full threaded, hex head screws with a minimum holding power of 300lbs. Each fastener is machine driven and seated. The hex head permits normal maintenance of units if required.

Locks

Steel uplocks automatically engage when table's folded and manually release for user position. Downlock engages automatically to prevent the possibility of a jackknife; manual release is accessible from both sides of the table.

Unitized Construction

Welded steel brackets and fittings solidly join and position legs to channel support aprons and anchor the torsion bar lift assists.

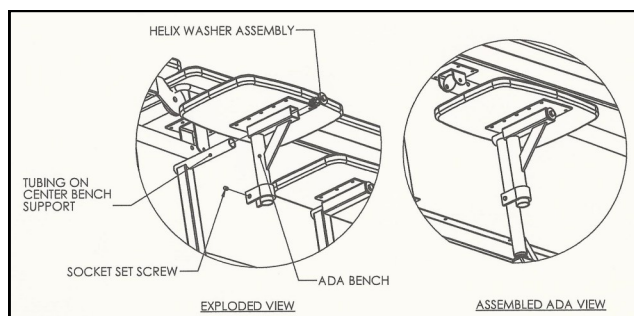
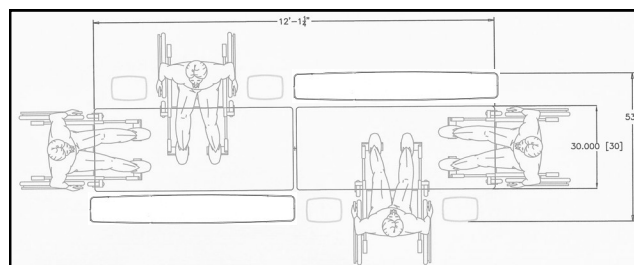
Lift Assists

Industry best dual lift assists include concealed torsion bars and extension springs for easy operation throughout the life of the table.

Finish

End legs are available in either Black Epoxy Powder Coat or Nickel Chromium. The understructure is black powder coat.

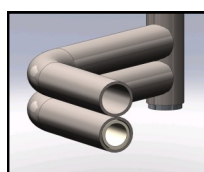
ADA - NPX Retro Kit



Section 902 of the 2010 ADA Standards requires 5% of the cafeteria space to be compliant. ADA tables are 28" to 34" H, have knee clearance of 27" H x 19" D and provide a 30" W serving surface. NPX12 end legs are recessed and meet these standards. In addition by simply removing a side bench and using our ADA Retro Kit (Model # 67-098) students can sit along the side of the table as well. Please contact Mitchell Customer Service for more information 800/290-5960.



Tamper resistant steel storage up-lock.



Triple steel tube end leg.

Long Lasting Quality

MODEL #	DESCRIPTION	STORAGE	BLACK EDGE	TABLE HT.	BENCH HT.	SEATS
NPX12 29 DE	12'-1" L Mobile Bench Table	53.5" W x 34" D x 79.5" H	Vinyl T-Mold DuraEdge™	29"	17"	12-16
NPX12 29 DB	12'-1" L Mobile Bench Table	53.5" W x 34" D x 79.5" H	Polyurea DuraBond™	29"	17"	12-16
NPX10 29 DE	10'-1" L Mobile Bench Table	53.5" W x 34" D x 73.5" H	Vinyl T-Mold DuraEdge™	29"	17"	10-12
NPX10 29 DB	10'-1" L Mobile Bench Table	53.5" W x 34" D x 73.5" H	Polyurea DuraBond™	29"	17"	10-12
NPX8 29 DE	8'-1" L Mobile Bench Table	53.5" W x 34" D x 63.5" H	Vinyl T-Mold DuraEdge™	29"	17"	8-10
NPX8 29 DB	8'-1" L Mobile Bench Table	53.5" W x 34" D x 63.5" H	Polyurea DuraBond™	29"	17"	8-10



Down-lock has heavy-duty release handle that automatically locks the two halves of the table at the hinge.

Also available in a 27" H Table.

MITCHELL
FURNITURE SYSTEMS