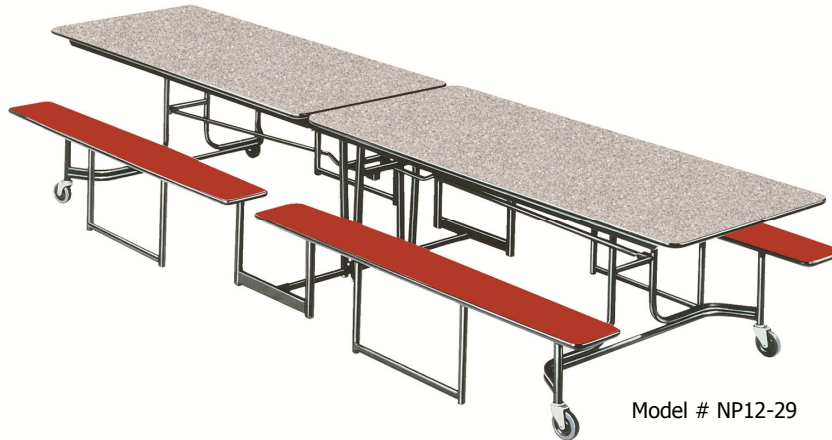


# THE MITCHELL TABLE STORY

## NP PorTable - Features and Benefits



Model # NP12-12 29



Model # NP12-29



MITCHELL  
FURNITURE SYSTEMS

*Mitchell table systems are made to last...*

- *Ideal for today's active kids and for the generations to follow*
- *Decades of service eases schools budgetary concerns*
- *Durable components mean less service downtime*
- *Laminate, backer & edge are sanitary and protect the table*

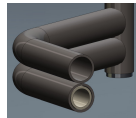
## compare these features & benefits...

SAFETY

FUNCTION

COSMETIC

**S** **F** Mitchell End Legs: Engineered for strength & durability, NP end legs are made with three 1-1/16" O.D. x .072 thick steel tubes. Better materials translates into decades of use



**S** Center Security: 1/2" steel lock bar at the center of the table securely fits into 7 gauge vertical hinges while in user position, preventing table jackknife. 1"x 1" box steel uplock secures table when in upright position

**S** **F** Handicap Accessible: Two end leg areas are recessed and have 20" D x 35" W x 28" H space. Bench area can be field converted for handicap seating

**C** **F** Mitchell Seating: 9" x 64" benches and 9" x 13" seats are roomy & made of the same material as the tabletop (we don't use flimsy breakable plastic.)

**F** **C** Bench & Seat Supports: Rugged is the best way to describe our seat undercarriage. Individual seats are supported with 9.5"x 4.5" plate steel on 1"x 2" box steel posts. Benches don't "sway back" with our mid-seat steel supports - the most durable seating on the market

**F** **C** Sanitary Top: High pressure laminate top & rigid plastic gator backer below are bonded to 3/4" - 45 lb. density particle board. A large color selection is available

**F** Mitchell Lift System: 4 torsion bars - one in each table leg provide controlled and uncomplicated lift assistance

**F** **C** Adjusting Brace Rods: Every floor is different our brace rods can be field adjusted to bring table tops into the proper parallel relationship with the floor

**F** **C** Non-mar Swivel Casters: Table end legs are equipped with large 4" (101.6 mm), non-floor marring, hard rubber casters that will move the table smoothly from storage into service

**F** **S** Powder Coat: Legs have black powder coat finish & other steel parts are also powder coated - durable, nice appearance, easy to maintain and keep clean

**F** **C** Steel Channel Aprons: Each table and bench top is supported with two-parallel, full-length, 1.75" - "U" channel, smooth edge, cold rolled steel aprons that are end dressed to protect against rough edges

**F** **C** Select an Edge: Choice of either DuraEdge™ extended vinyl bull nose fixed 6" O.C. for terrific bump resistance, or Armor Edge™ the original sprayed-on polyurea edge

**S** **F** **C** Laminate: Hundreds of laminate choices from Wilsonart Design Series 1, Group 38 & 60 finishes - a surface designed for active use and easy maintenance. Choose a contrasting color for table and bench top

**F** Air Craft Lock Nuts: Only the finest quality bolts and nuts are used at all pivot points. Lock nuts resist tampering and wont loosen over time, an extra measure of security

CALL US: 414/342-3111 - E-MAIL US: sales@mitchell-tables.com - SEE US ON THE WEB: www.mitchell-tables.com  
VISIT US AT: 1700 W. St. Paul Avenue, Milwaukee, WI 53233